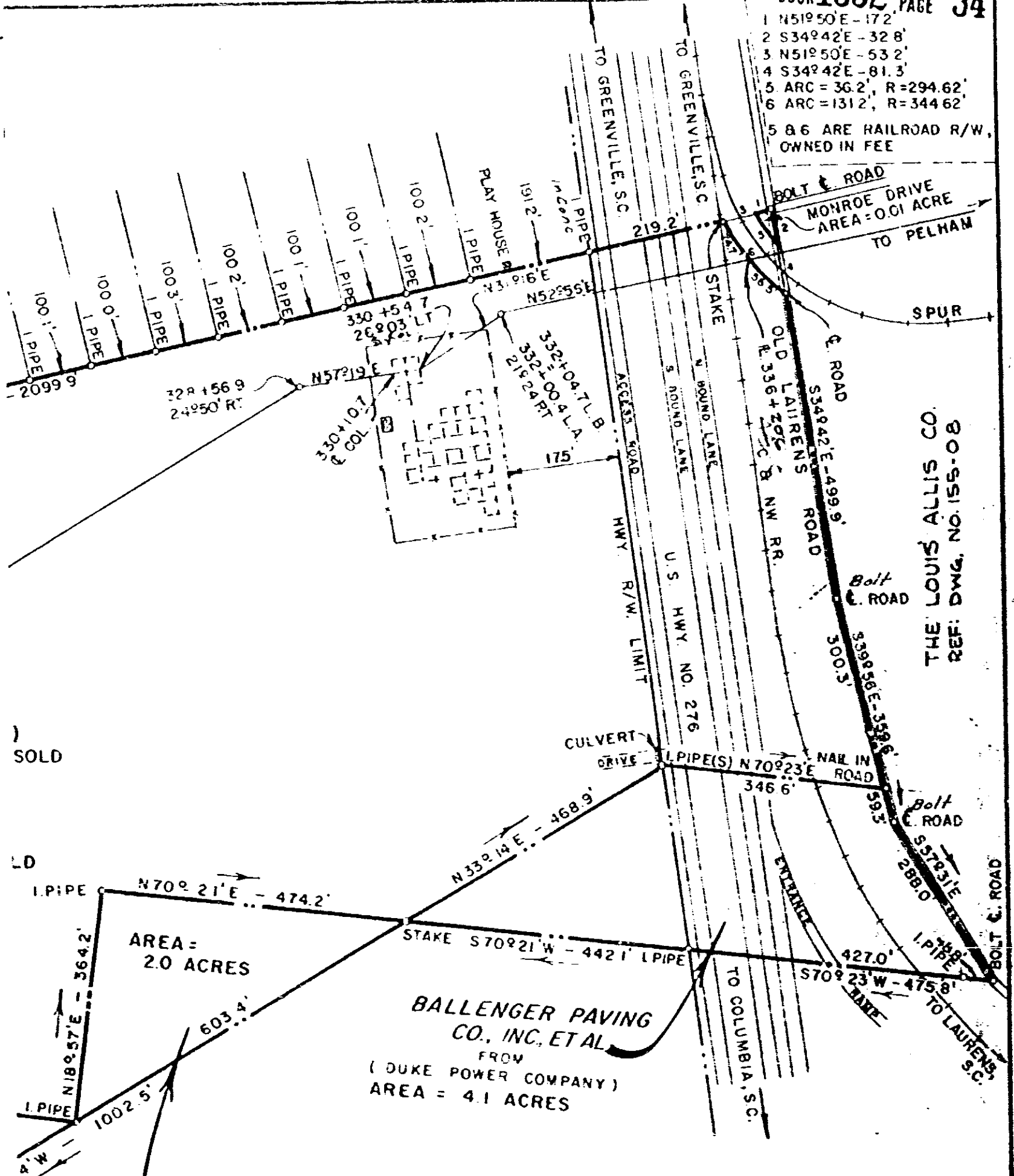


- 1 N51°50'E - 172'
 - 2 S34°42'E - 32.8'
 - 3 N51°50'E - 53.2'
 - 4 S34°42'E - 81.3'
 - 5 ARC = 36.2', R = 294.62'
 - 6 ARC = 131.2', R = 344.62'
- 5 & 6 ARE RAILROAD R/W,
OWNED IN FEE



THE LOUIS ALLIS CO.
REF: DWG. NO. 155-08

SOLD

LD

AREA = 2.0 ACRES

BALLENGER PAVING
CO., INC., ET AL
FROM
(DUKE POWER COMPANY)
AREA = 4.1 ACRES

DUKE POWER COMPANY
FROM
(BALLENGER PAVING CO., INC., ET AL)
TOTAL AREA = 3.4 ACRES
D-3647

RECORDED SEP 4 1981
at 10:30 A.M.

6101

DUKE POWER COMPANY
GREENBRIAR RETAIL LOT
ACQUIRED FROM
ALPHA TODD, ET AL.
Near MAULDW, S.C.
AUSTIN TOWNSHIP
GREENVILLE COUNTY

NOTE FOR TOPOGRAPHIC MAP SEE DWG. NO. 104-109
REVISED 6-29-67

SCALE 1" = 200'
BOOK NO. 892, 920, 947, & MISC. BK 273

AUGUST 9, 1968
FILE NO. 156-86

4328 RV-23

0034